



The Euclid Chemical Company

EUCO **Products for** **Quality Shotcrete**





SHOTCRETE SOLUTIONS

The Euclid Chemical Company is involved in shotcrete applications for all types and sizes of projects including architectural rehabilitation, structural rehabilitation, construction of swimming pools, water parks and skateboard parks, slope stabilization projects, surface and underground mining, and tunneling projects. The Euclid line of shotcrete products is successfully used with both manual and robotic application methods.

Our line of products for wet and dry shotcrete applications have performance and cost-saving advantages.



The EUCOSHOT line of products consists of admixtures for use in both dry and wet shotcrete applications and includes the TUF-STRAND SF™ structural fibers.

Dry Shotcrete (Guniting) Applications



EUCOSHOT is a microsilica-modified, shotcrete material that can be supplied in 50lb (22.5kg) or 3,330lb (1,500kg) bags.

It can be supplied with optional micro-fibers and/or accelerator.

EUCOSHOT B and **EUCOSHOT B-Accelerated** contain the same products as EUCOSHOT less the aggregates. It is a binder-only shotcrete mix for lower transportation costs to sites having adequate shotcrete aggregates.

EUCOSHOT D-A is a dry accelerator designed to speed the setting time of dry shotcrete when water is added at the nozzle.

EUCOSHOT D-AF, also a dry accelerator, is a high performance, alkali-free product.



Wet Mix Shotcrete



Wet shotcrete admixtures include a set stabilizer, flow enhancement admixtures, and high-performance accelerators.

EUCOSHOT S, a set stabilizer, can be added at dosage rates to control the setting time of shotcrete mixes for up to 24 hours, or until it is reactivated by an accelerator. An additional quantity of EUCOSHOT S can be added up to hours later to extend the initial stabilization time.

Flow Enhancement

Flow enhancement admixtures are used in shotcrete to increase flow properties without adding water when long pumping distances are encountered. They are also beneficial in maintaining flow with the addition of structural fibers.

EUCOSHOT SP is a superplasticizing admixture that greatly increases the slump of a shotcrete mix without the addition of water.

EUCOSHOT SP-HT, similar to EUCOSHOT SP, but formulated for high temperature usage, will extend the working time of shotcrete at temperatures up to 130°F (54°C).

EUCOSHOT SSP, is a high-end superplasticizer that can be used to pump shotcrete excessively long distances. It has been used successfully to flow a shotcrete mix over 7,000 (2,000m) feet vertically without segregation, at a 10" (250mm) slump.

EUCOSHOT IL is an internal lubricant that will ease the movement of cement and aggregate particles within the mix to aid the pumping and flow processes. Although the rheological properties of the mix will change, the slump will not. Addition of EUCOSHOT IL can also lessen the wear on shotcreting equipment.





Liquid Accelerators

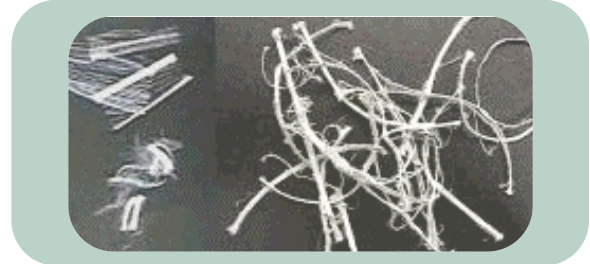
SURESHOT is a liquid, high performance accelerator specifically engineered to give high early and ultimate compressive strengths in shotcrete applications.

SURESHOT AF is an alkali-free, high performance shotcrete accelerator without the hazards normally associated with sodium silicate accelerators. Dosages can be adjusted to give the optimum setting characteristics for different environments.



TUF-STRAND SF™ Fibers

TUF-STRAND SF These synthetic structural fibers are a patented, coarse monofilament, self-fibrilating polypropylene/polyethylene blend, successfully used to replace welded wire mesh and steel fibers in a wide variety of applications. TUF-STRAND SF fibers are designed to provide shotcrete with increased flexural toughness, impact and fatigue resistance, with the added benefit of superior plastic shrinkage cracking control.



Other Shotcrete Products

EUCOSLIP VOX is a V.O.C.-compliant releasing agent, which can be sprayed onto shotcreting equipment prior to startup to simplify cleanup at the end of the day. It is also excellent for releasing shotcrete samples from molds. EUCOSLIP VOX is suitable for use with steel, wood, aluminum, fiberglass or PVC.

PUMPTec "B" is a line-slicking compound used to provide initial lubrication to piping, hoses and pumps used in shotcreting applications.



The Euclid Chemical Company

19218 Redwood Road ♦ Cleveland, Ohio 44110
Toll-free: [800] 321-7628 ♦ Fax: [216] 531-9596



www.euclidchemical.com

An **RPM** Company

The Euclid Chemical Company, Underground Division, is a worldwide supplier of quality products for the mining and tunneling industries. Marketed under the EUACO name, we offer a full line of products, based on the latest technologies.

B 01 1/04 2M © 2003 The Euclid Chemical Company. All rights reserved. The information contained herein is, to our knowledge, true and accurate. While this material is furnished in good faith, no warranty expressed or implied, of merchantability, completeness, fitness or otherwise is made. This material is offered only for your consideration, investigation and verification, and The Euclid Chemical Company disclaims any liability incurred from the use thereof and shall not in any event, be liable for any special, incidental or consequential damages arising from such use. This information is not intended to be all inclusive and the manner and conditions of use and handling of any material may involve other or additional considerations specific to the use or user. Nothing herein should be construed as permission or recommendation to infringe any patent or as to any specific use. No agent, representative or employee of this company is authorized to vary any term of this notice.